

Landscape Maintenance Districts

LLAD No. 2, Zone 35 - Montebello

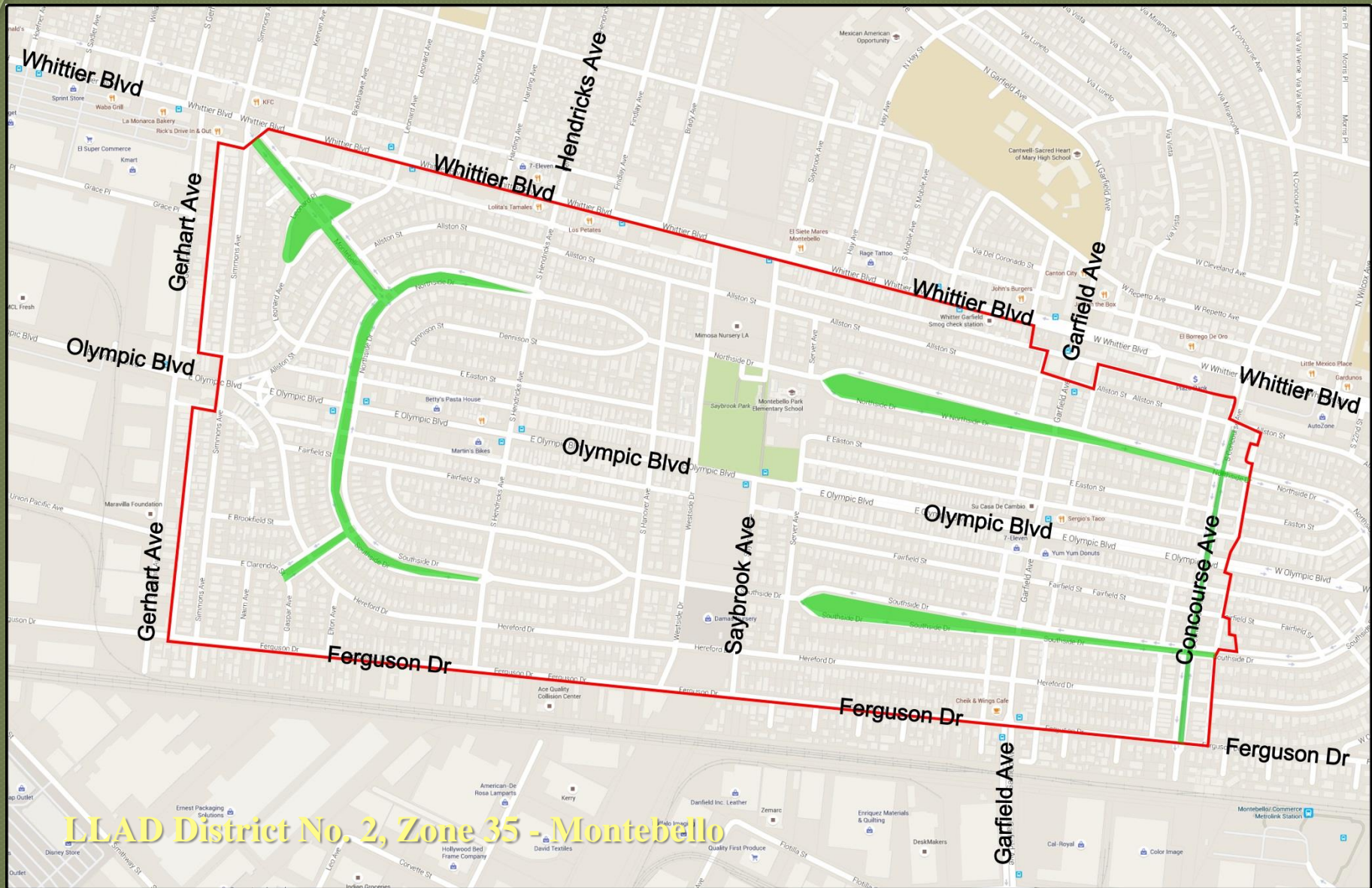


What is an LMD?

A Landscape Maintenance District (LMD) is a special district formed to operate and maintain landscape improvements and appurtenant facilities pursuant to the Landscaping and Lighting Act (LLA) of 1972 (Part 2 of Division 15 of the California Streets and Highway Code) and applicable provisions of Proposition 218 (Article XIID of the California Constitution). Under the provisions of these laws, the cost of the operation and maintenance of the LMD is funded through the assessments collected from the benefitting property owners in the LMD.

Why do we have LMDs?

To provide benefitting property owners the opportunity to pay for enhanced landscaping and appurtenant improvements, maintenance, and services beyond those generally provided by the County.



LLAD District No. 2, Zone 35 - Montebello

LLA District No 2 – Zone 35

Montebello

- Originally formed in 1940 as a Park, Recreation, and Parkway District
- Funded through “ad valorem” tax on all properties within the District
- LMD was formed in 1979 as LLA District No. 35 Montebello
- Consolidated into LLA District No. 2 as Zone 35 – Montebello in 1995
- A Cost of Living provision was proposed in 2005. It was voted down by residents.
- Currently, there are 1956 parcels in Zone 35 - Montebello
- Current approved assessment rate is \$64.00 per parcel
- Maintenance includes:
 - Mowing, edging, weed and disease control
 - Irrigation maintenance and repairs
 - Fertilization of existing turf
 - Tree trimming and removals
 - Pest Control
 - Graffiti removal

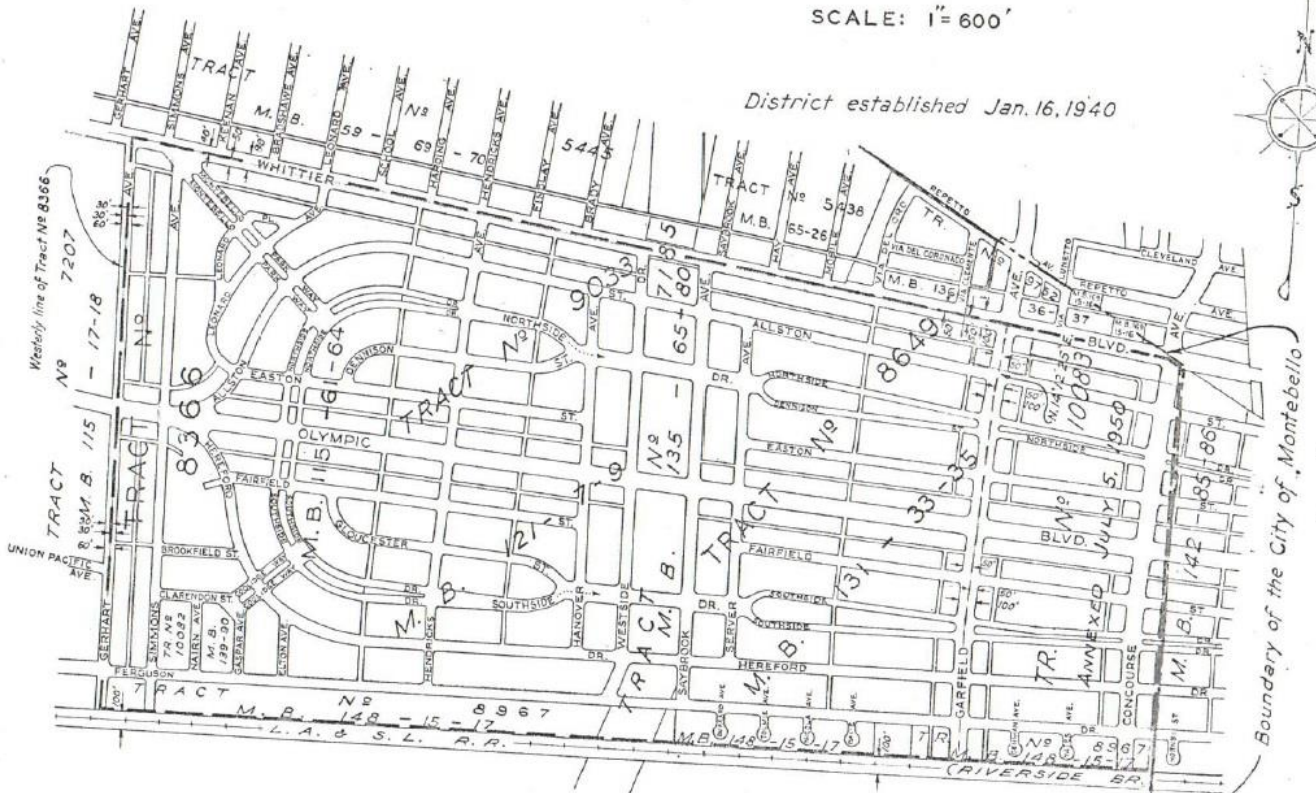
MONTEBELLO PARK PARK, RECREATION AND PARKWAY DISTRICT



WILLIAM J. FOX COUNTY SURVEYOR

SCALE: 1" = 600'

District established Jan. 16, 1940



Current State of Medians - Grass

- Water and Turf Restrictions
 - Use of potable water for irrigation of ornamental turf on medians is no longer allowed.



Current State of Medians - Trees

- Natural Life Cycle of Trees
 - White Alders live 20-30 years outside their natural environment
- Prolonged Drought Conditions
- 112 dead trees were removed



Redesign Opportunities

Tree and Plant Replacement



Jacaranda



Chinese Elm



Desert Museum Palo Verde



Brisbane Box



Coast Live Oak



Pink Dawn Chiltapia

Redesign Opportunities

Walking/Jogging Paths



Redesign Opportunities

Pocket Parks/Passive Recreation



Redesign Opportunities

Community Gardens



Redesign Opportunities

Green Streets/Water Quality Control



Redesign Opportunities

Other Ideas

Community Meeting Survey

October 29, 2015

Address: _____

Please rank from 1 (not interested) to 5 (very interested), how interested you would be in seeing these items in your community.

Please take a moment to fill out the survey provided

Trees (circle preferred below)

– Jacaranda – Chinese Elm – Coast Live Oak

– Brisbane Box – Eucalyptus – Ginkgo

– Pink Dawn Chitalpa

Community Gardens 1 2 3 4 5

Walking/Jogging Paths 1 2 3 4 5

Pocket Parks/Passive Recreation 1 2 3 4 5

Green Streets/Water Quality 1 2 3 4 5

Other (please specify below) 1 2 3 4 5

Turn in at the end of the meeting or e-mail to
jugarcia@dpw.lacount.gov by 11/12/2015

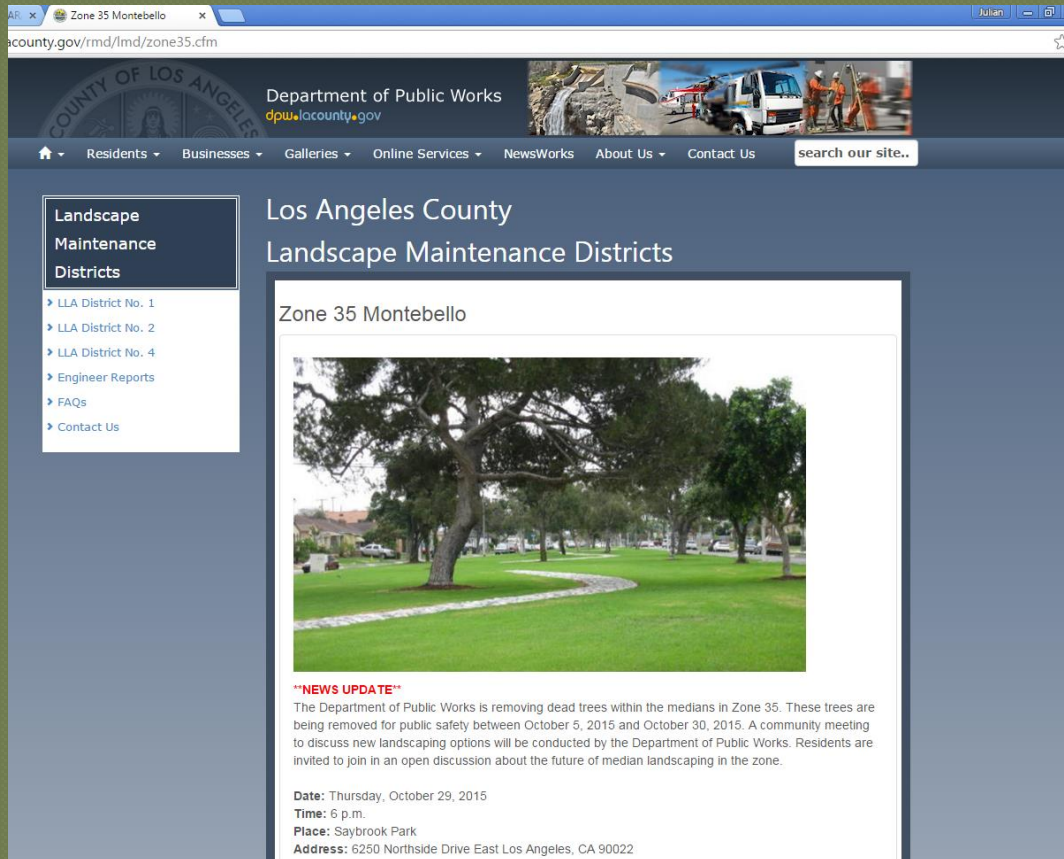
Next Steps

- Obtain consultant (landscape specialist)
- Follow up community meetings
- Contact Julian Garcia at Landscape Maintenance Districts, Public Works
(626) 300-2061
jugarcia@dpw.lacounty.gov

LLA District No 2 – Zone 35

Montebello


- For more information on this Zone, please visit our website:
<http://dpw.lacounty.gov/rmd/lmd/zone35.cfm>



The screenshot shows a web browser window with the URL <http://dpw.lacounty.gov/rmd/lmd/zone35.cfm>. The page header includes the Los Angeles County seal and the Department of Public Works logo with the website dpw.lacounty.gov. A navigation menu contains links for Residents, Businesses, Galleries, Online Services, NewsWorks, About Us, and Contact Us, along with a search bar. The main content area is titled "Los Angeles County Landscape Maintenance Districts" and features a sub-section for "Zone 35 Montebello". This section includes a photograph of a park area with a large tree and a path. Below the photo is a "NEWS UPDATE" section with the following text: "The Department of Public Works is removing dead trees within the medians in Zone 35. These trees are being removed for public safety between October 5, 2015 and October 30, 2015. A community meeting to discuss new landscaping options will be conducted by the Department of Public Works. Residents are invited to join in an open discussion about the future of median landscaping in the zone." At the bottom of the news update, the following details are provided: Date: Thursday, October 29, 2015; Time: 6 p.m.; Place: Saybrook Park; Address: 6250 Northside Drive East Los Angeles, CA 90022.

Los Angeles County
Landscape Maintenance Districts

Zone 35 Montebello



****NEWS UPDATE****
The Department of Public Works is removing dead trees within the medians in Zone 35. These trees are being removed for public safety between October 5, 2015 and October 30, 2015. A community meeting to discuss new landscaping options will be conducted by the Department of Public Works. Residents are invited to join in an open discussion about the future of median landscaping in the zone.

Date: Thursday, October 29, 2015
Time: 6 p.m.
Place: Saybrook Park
Address: 6250 Northside Drive East Los Angeles, CA 90022

Q&A